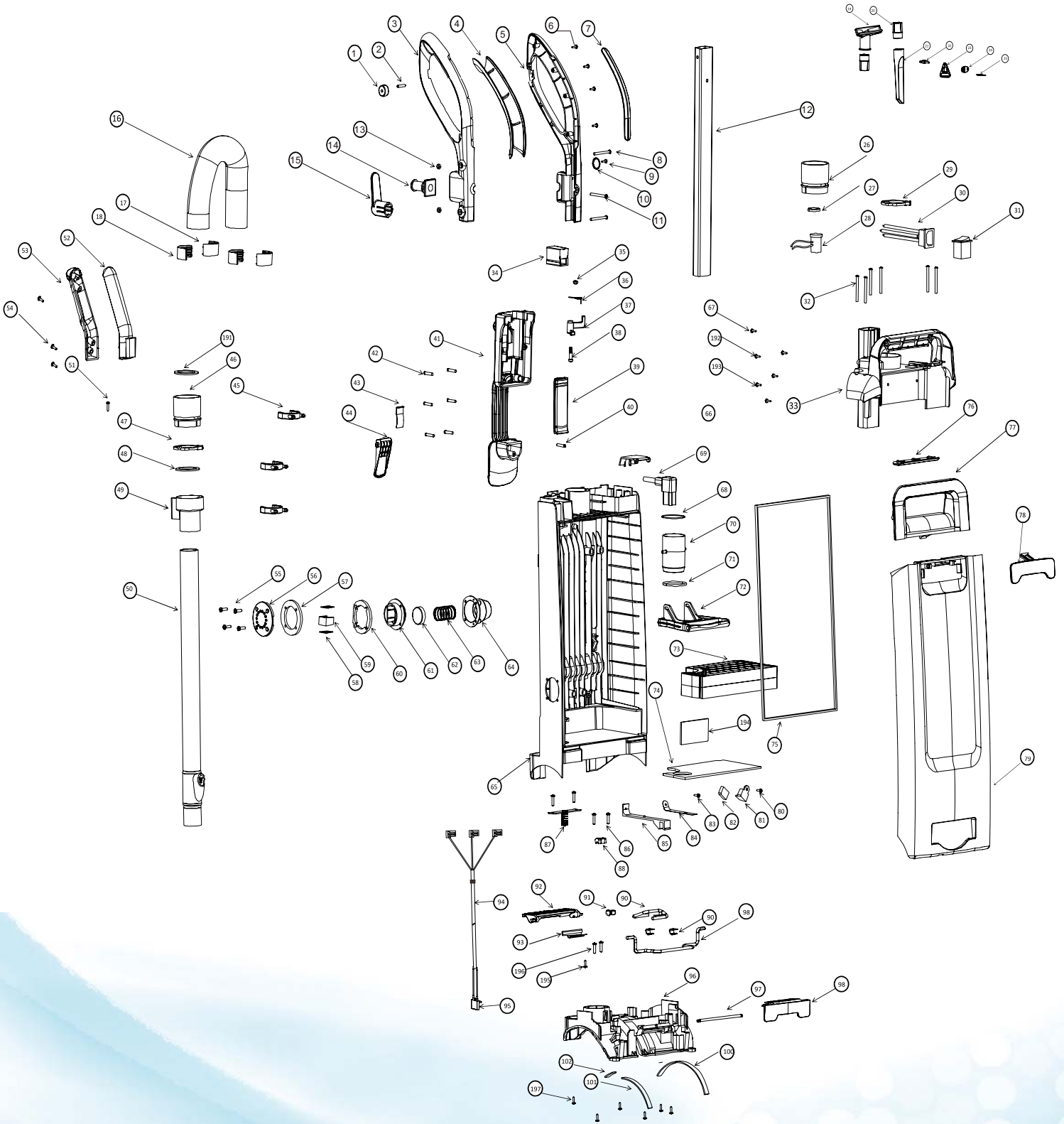


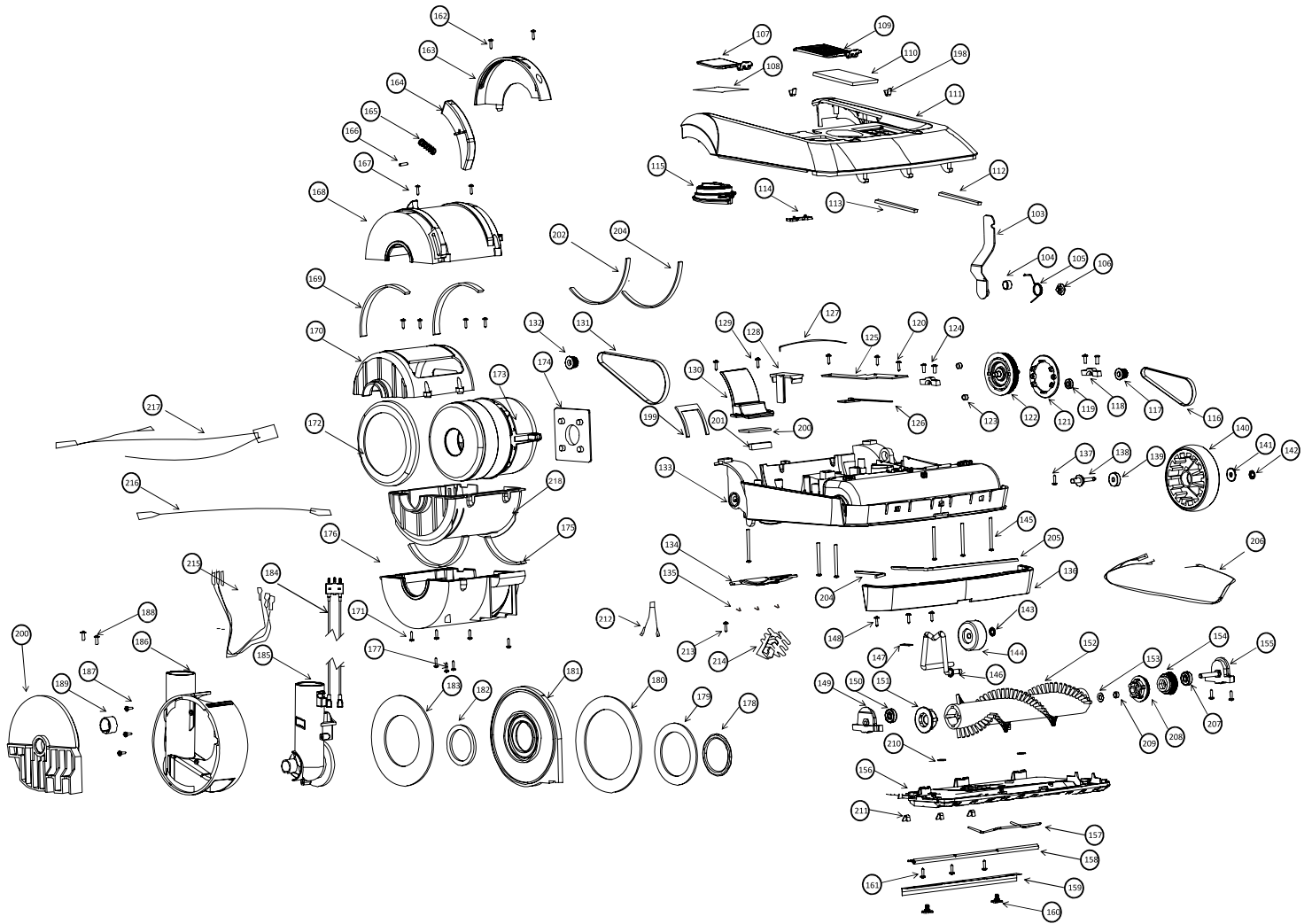


# i-vac 30<sup>UR</sup>





# i-vac 30<sup>UR</sup>





# i-vac 30<sup>UR</sup>

Diagram #	Description	Item Number	Remark
1	Handle Caster	86.2002.0	
2	Handle Caster Shaft	86.1002.0	
3	Handle (Left)	86.0002.19	
4	Gray Handle Grip	86.2001.32	
5	Handle (Right)	86.0001.19	
6	Screw M3 x 12 Self tapped	85.1008.0	
7	Soft touch Handle Grip	86.2003.32	
8	Screw M5 x 43	86.1003.0	
9	Screw Parker 2.9 x 16	73.0004.1	
10	Clip Fixation for Cas/Yellow Cable	73.0006.8	
11	Screw M5 x 30	86.1009.0	
12	Aluminum Handle Tube	86.1001.0	
13	Nut M5 (Black)	86.1004.0	
14	Cable Hook Shaft	86.0030.8	
15	Cable Hook	86.0031.8	
16	Hose 35mm	88.2001.0	
17	Hose Connector (Left)	88.0001.01	
18	Hose Connector (Right)	88.0001.02	
19	Upholstery Tool Bristle	02.0030.0	
(19)	Upholstery Tool without Bristle ABS 32mm02.0031.0/01		
20	Tool Adapter 35 - 32mm	88.0006.0	
21	Crevice Tool 32mm 177mm ABS	02.0032.2	
22	Thumb Screw 5 x 20	11.0103.0	
23	Cable Restraint Cable Side	03.0041.0	
24	Cable Restraint Can Side	03.0038.0	
25	Metal Ring 30mm	03.0040.0	
26	Top Handle Hose Connector	88.0020.39	
27	Bag Full Indicator Top Cover	04.0011.0	
28	Main Cable	87.3001.0	
29	Hose Clip	02.0025.1/1	
30	3 Prong Inlet Receptacle	75.0002.8	
31	4 Prong Power Switch	04.0009.30	
32	Screw M5 x 55 Self tapped	87.1011.0	
33	Carry Handle Back	87.0003.x	
34	Front door Alignment Slot	87.0007.0	
35	Nut M5 Nylon	04.0048.0	
36	Spring 12 x 0.6	04.0018.1	
37	Paper Bag Sensor Bracket	87.0031.8	
38	Screw M5 x 26	04.0017.0	
39	Soft Touch Back Handle	87.2009.0	
40	Screw M4 x 20 Self tapped	85.1025.0	
41	Back Handle	87.0009.0	
42	Screw M4 x 20 Self tapped	85.1025.0	
43	Spring Plate for Height Adjustment	87.1006.0	
44	Aluminum Handle Tube Clip Plate	87.0018.8	
45	Wand Lock	87.0016.8	
46	Hose Connector	88.0020.0	
47	Hose Clip	02.0025.1/1	
48	Felt EVA ID 35 - OD 47 x 2.5mm	88.2002.0	
49	Wand Click Part	88.0003.0	
50	Powder Coated Wand with Yellow Button	88.1001.0	
51	Screw M4 x 8 Self tapped	00.0104.0	
52	Wand Handle (Top)	88.0004.0	
53	Wand Handle (Bottom)	88.0005.0	
54	Screw M3 x 12 Self tapped	85.1008.0	
55	Screw 3.5 x 16	00.0020.0	

Diagram #	Description	Item Number	Remark
56	Wizzo Top Cover	77.0024.8	
57	Wizzo Top Sealing Ring	77.0019.01	
58	Wizzo Sound Detector	77.0029.1	
59	Wizzo Spring Plate	77.0030.0	
60	Wizzo Lower Sealing Ring	77.0025.01	
61	Wizzo Inner Frame	77.0028.0	
62	Wizzo Spring Cover	77.0026.0	
63	Spring 36 x 22.9 x .9mm	77.0029.21	
64	Wizzo Outer Can	77.0027.0	
65	Rear Body	87.0005.x	
66	Cable Cover	87.0015.x	
67	Screw M3.5 x 15 Self tapped	87.1007.0	
68	Sealing Ring 3mm	87.2013.0	
69	Power Cord	03.0026.65	
70	Paper Bag Tube Holder	87.0017.8	
71	Sealing Ring 1.5mm	87.2012.0	
72	Paper Bag Holder Push Handle	87.0006.8	
73	Standard Filter (Black)	87.2002.0	
74	Rubber Filter Cassette	87.2003.0	
75	Front Door Seal	87.2001.0	
76	Rubber Carry Handle	87.2001.32	
77	Carry Handle Front	87.0004.x	
78	Door Release lever	87.0100.0	
79	Front Door	87.0200.x	
80	Screw M4 x 8 Self tapped	00.0104.0	
81	Rear Body Little Cover	87.0020.0	
82	Rubber Stopper	87.2011.0	
83	Screw M3 x 12 Self tapped	85.1008.0	
84	Sensor Filter Spring Bracket	87.1012.0	
85	Sensor Filter Bracket	87.0019.8	
86	Screw M4 x 14 Self tapped	85.1018.0	
87	Steel Plate With Spring	87.1015.0A	
88	Steel Wire Fixation Rear	87.0013.0	
89	Pression V Spring	87.1017.0	
90	Steel Wire Release Rear	87.1004.0	
91	Steel Wire Fixation Front	87.0012.0	
92	Park Release Pedal	87.0014.8	
93	Back Lower Release Handle Spring	87.1005.0	
94	Main Cable W/O Indicator	87.3001.0	
95	Assy Gold plated Connector Female	S.85.0035.0/A	
96	Swivel Base	87.0010.0	
97	Inferoanterior Release Shaft	87.1003.0	
98	Steel Wire Release	87.1002.0	
99	Quick Release Handle	87.0011.0	
100	Felt Swivel Base	87.2005.0	
101	Felt Swivel Neck	87.2006.0	
102	Felt 23.5 x 9.5 x 4mm	87.2010.0	
103	Support Bracket Yellow	85.1009.8	
104	Copper Bushing Support Bracket	85.1036.0	
105	Spring Support Bracket	85.1040.2	
106	Screw M5 Coin Head	85.1039.0	
107	Transparent Name Card Cover	85.0005.996	
108	Name Card	88.4011.0	
109	Filter Bracket	85.0006.x	
110	Felt Air Outlet Filter	85.2003.1	
111	Brush Cover Housing	85.0004.x	



# i-team



# i-vac 30<sup>UR</sup>

Diagram #	Description	Item Number	Remark
112	Felt 188 x 4,5 x 3mm	85.2011.01	
113	Felt 80 x 6 x 3mm	85.2011.02	
114	LED Light Cover	85.0040.996	
115	Height Adjustment Knob	85.0008.0	
116	Clutch to Roller Belt	85.2007.0	
117	Motor Gear 14 x Pa6	85.0030.0	
118	Bearing Cover	85.0034.0	
119	Bearing 686 DDU NSK	85.1014.0	
120	Screw M3 x 12 Self tapped	85.1008.0	
121	Clutch Gear Cover	85.0033.0	
122	Clutch Gear 60X	85.0032.0	
123	Clutch Magnet	85.1013.0	
124	Screw M4 x 20 Self tapped	85.1025.0	
125	Main PCB Board 52 x 100,5 x 5mm	85.3002.0	
126	LED Light with PCB Board	85.3005.0	
127	Adjustable Wheel Spring Shaft	85.1004.0	
128	Housing Height Adjustment Clip Plate	85.0009.0	
129	Screw M3.5 x 15 Self tapped	87.1007.0	
130	Wire Fixation Bracket	85.0012.0	
131	Motor to Clutch Belt	85.2008.0	
132	Gear 16X for Clutch PA 50%	85.0031.0	
133	Brush Housing	85.0100.x	
134	Bottom Cover	85.0003.8	
135	Bottom Cover Spring	85.1031.0	
136	Bumper	85.0011.x	
137	Screw M3 x 15 Self tapped	85.1015.0	
138	Castor Heat Treated Shaft	85.1016.0	
139	Bearing 635ZZ	85.1049.0	
140	Rear Castor	85.0037.32	
141	Steel Washer (Black)	85.1032.0	
142	E-Circle Clip	85.1034.0	
143	Star lock 6mm	14.1401.5	
144	Front Castor	85.0038.32	
145	Screw M5 x 40 Self tapped	85.1003.0	
146	Shaft Height Adjustment	85.1005.0	
147	Front Caster Shaft Fix Plate	14.0101.0	
148	Screw M3 x 10 Self tapped	85.1035.0	
149	Brush Roller Bracket (Right)	85.0015.0	
150	Bearing For Roller 698-2RS	85.1007.2	
151	Brush Roller Bearing Cover (Left)	85.0018.0	
152	Brush Roller	85.0013.0	
153	Star lock 6mm	14.1401.5	
154	Brush Roller Gear (Right)	85.0019.0	
155	Brush Roller Bracket Left	85.0014.0	
156	Brush Housing Bottom Plate	85.0200.0	
157	Steel Wire	85.1023.0	
158	Brush Protector	85.1001.0	
159	Brush Protector Rubber Strip	85.1001.1	
160	Bottom Plate Coin Nut	85.1043.0	
161	Screw M3.5 x 8 Countersunk Self tapped	85.1002.0	
162	Screw M4 x 20 Self tapped	85.1025.0	
163	Motor Cover (Right)	85.0029.x	
164	Park Height Bracket	85.0010.0	
165	Spring for Park Bracket	85.1006.0	
166	Shaft for Park Height Bracket	85.1033.0	
167	Screw M4 x 14 Self tapped	85.1018.0	

Diagram #	Description	Item Number	Remark
56	Wizzo Top Cover	77.0024.8	
168	Motor Cover Top (Outside)	85.0028.x	
169	Felt 145 x 10 x 7mm	85.2015.0	
170	Motor Cover Top (Inside)	85.0026.0	
171	Screw M4 x 10 Crosshead Self tapped	00.0121.0	
172	Motor Rubber Ring 130 x 9.5 x 7mm	85.2005.0	
173	Motor 1000 Watt	21.6342.61	
174	Rubber Pad Top of Motor	85.2006.0	
175	Felt 100 x 10 x 7mm	85.2016.0	
176	Motor Cover Bottom (Outside)	85.0027.x	
177	Screw M3.5 x 15 Self tapped	87.1007.0	
178	Seal Support ID 43 - OD 55 x 4mm	85.2004.0	
179	Felt ID 60.5mm - OD 84mm x 3mm	85.2013.0	
180	Felt ID 94.5mm - OD 130mm x 3mm	85.2012.0	
181	Air Intake Support (Right)	85.0024.0	
182	Motor Cover & Support Plate Rubber Ring	85.2010.0	
183	Felt ID 70mm - OD 123mm x 2mm	85.2014.0	
184	Assy Gold plated connector Male	S.85.3006.0/A	
185	Swivel Outlet	85.0022.0	
186	Swivel Inlet	85.0021.0	
187	Screw M3 x 12 Self tapped	85.1008.0	
188	Screw M4 x 10 Crosshead Self tapped BL-NI	00.0105.0	
189	Swivel Bushing	85.0039.0	
190	Air Intake Support Plate (Left)	85.0020.0	
191	Felt EVA ID 35 - OD 47 x 2.5mm	88.2002.0	
192	Screw M3.5 x 30 Self tapped	87.1008.0	
193	Screw M3 x 10 Self tapped	85.1035.0	
194	Rubber 75 x 38.5 x 3mm	87.2008.0	
195	Screw M3 x 12 Self tapped	85.1008.0	
196	Screw M3 x 15 Self tapped	85.1015.0	
197	Screw M5 x 25 Self tapped	87.1009.0	
198	V-Spring	85.1030.0	
199	Felt 45 x 20 x 2mm	85.2003.01	
200	Felt 57.5 x 44 x 2mm	85.2003.0	
201	Base Felt for Brush Unit	85.2009.0	
202	Felt White Left for Brush Unit	85.2009.01	
203	Felt White Right for Brush Unit	85.2009.02	
204	Felt 106 x 2.8 x 1.66mm	85.2001.02	
205	Felt Strip (EVA) 236 x 1.6 x 2.8mm	85.2001.01	
206	Main Wire Brush Housing 600mm	85.3007.0	
207	Bearing 626ZZ NSK	85.1047.0	
208	End Cap (Left)	85.0019.01	
209	Brush Roller Sleeve Bracket (Left)	85.0045.0	
210	Fiber Ring 11 x 4.5 x 1	11.0104.0	
211	V Spring	85.1030.0	
212	RFI Hoov with Term	05.0077.2	
213	Screw M4 x 14 Self tapped	85.1018.0	
214	3P Connection Bracket	04.0030.03	
215	Main Wire Brush Housing 600MM	85.3007.0	
216	Gray Wire 400mm Isolation	85.3004.0	
217	Thermal Switch 110C	85.0044.2	
218	Motor Cover Bottom Inside	85.0026.0	



# i-team