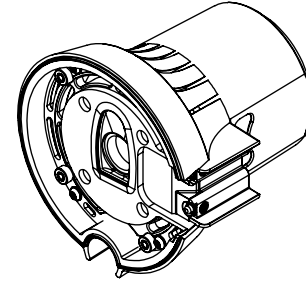
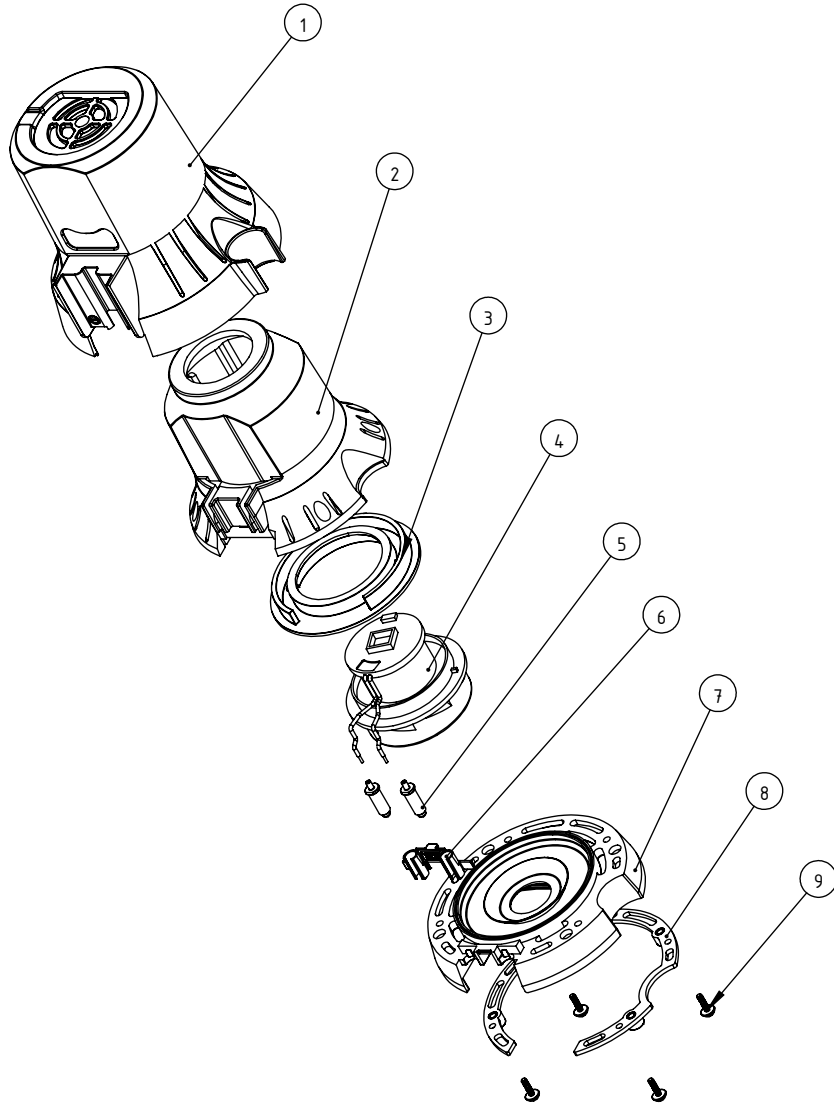


1	2	3	4	5	6
Revision	Description	Revised	Date		
-	FIRST RELEASE	YANG	04/Sep./2024		



Item	P/N	Description	Qty.
1	115.0117.357G	[MCH 211-022] (108) VACUUM MOTOR HOUSING BOTTOM GREY P431	1
2	115.1126.0D	VACUUM MOTOR BOTTOM RUBBER	1
3	115.0362.0	BRUSHLESS MOTOR ADAPTOR SIMPLE MOULD	1
4	115.0310.1C	BRUSHLESS MOTOR 13-30V DC 60W/80W/100W GLUE DIPPIN	1
5	S.115.0357.0A	ASSY POGO PIN 10A NICKEL PLATED SPRING LEAF INSIDE	2
6	115.0124.0C	[MCH 211-183] (104) VACUUM MOTOR ELECTRO CONTACT BLOCK	1
7	115.1125.0B	VACUUM MOTOR TOP RUBBER	1
8	115.0119.357B	[MCH 211-035] (103) VACUUM MOTOR BRACKET GREY P431	1
9	115.0120.0	[MCH 011-102] (101) EJECTOR PIN SCREW WN 5451 40	4

TOLERANCES UNSPECIFIED		REMARK: -		SMT-FACTORY DONGGUAN THE FRIENDLY FAMILY 东莞硕能塑胶模具有限公司 ASSEMBLY AND MOULDING OF CLEANING			
LINE	ANGLE	-					
.xxx ±0.005	x ±2°	-		APPROVED	CHECKED	DISGNE	REV.
.xx ±0.05	.x ±1.5°	-					-
.x ±0.1	.xx ±1°	-					-
. ±0.2	.xxx ±0.5°	-					-
xx ±0.5		-					-
xxx ±1		-					-
SHEET 1 OF 1		DATE		04/Sep/2024	SCALE	1:1	PROJECT
				YANG	UNIT	mm	PART NO
							S.115.3117.357
							SIZE
							A4